

**TUSK®**

Part #1467820003

Tusk Sub Zero Plow Mount Polaris RZR 570 / 800

**Safety Instructions:**

For your safety and the safety of others, we have provided some basic safety instructions. We have also included safety stickers on the plow itself as a reminder. We recommend that you read and understand all safety instructions before operating the plow system. It is not possible to warn you about all potential safety risks when using this plow system. We suggest operating cautiously and using good judgement in addition to reading and understanding the following:

**SEVERE INJURY, DEATH, OR EQUIPMENT DAMAGE MAY RESULT IF  
SAFETY INSTRUCTIONS ARE NOT FOLLOWED.**

- Read snowplow instructions, UTV operators manual, and safety decals before operating.
- Wear safety protection as recommended in UTV operators manual.
- When plowing snow into a pile, start backing up before raising the blade.
- Keep bystanders away from plow or UTV while plowing or stationary.
- When blade is not in use, stop UTV engine, lock brakes, and lower blade to the ground.
- Do not exceed 5 MPH with blade installed.
- Operate with extreme caution on slopes, steep grades, and rough terrain.
- Do not allow riders on blade or UTV while moving or stationary.
- Be aware of hidden objects under the snow as they may violently alter the speed and direction of the UTV.
- Do not exceed 5 MPH with plow mount installed even with the plow and push tubes removed.
- Remove Plow Mount before resuming normal trail use.

**WARNING! Remove this plow mount for normal UTV use**

# Tusk UTV Snow Plow Mount #1467820003

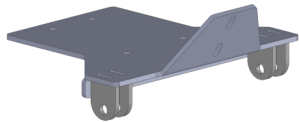
Thanks for your purchase of the Tusk UTV Snow Plow for your Polaris. Please not the information and instructions below to get the most out of your snow plow.



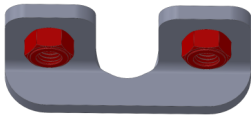
**Assembly:** *Before you throw any packaging away, make sure you received of all of the necessary hardware.*

Hardware:	QTY:
Plow Mount	1
Front Nut Plate	1
Middle Nut Plate	2
Rear Nut Plate	1
M8x25mm Hex Bolt	6

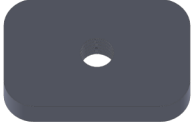
Vehicle Fitment:	
2012-2022	RZR 570
2007-2014	RZR 800



Plow Mount



Front Nut Plate



Middle Nut Plate



Rear Nut Plate



M8x25mm Bolt



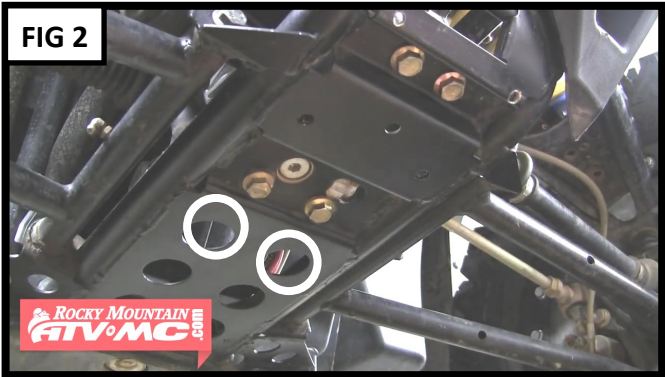
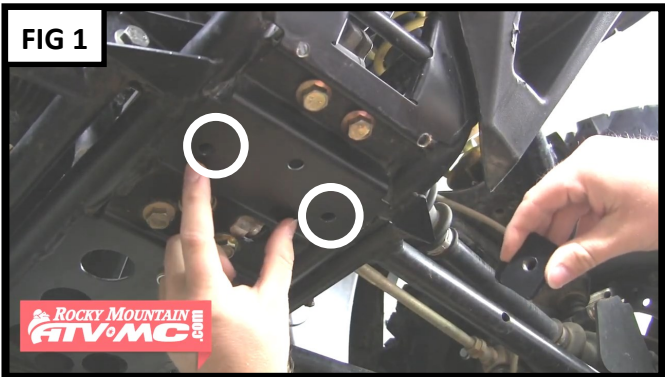
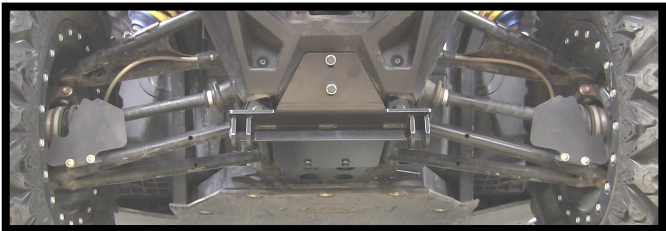
M8 Washer

## Mount Installation Instructions:

1. Begin installation by removing the front skid plate if applicable.
2. Pass the **(2) Middle Nut Plate** over the holes in the frame. Line up the threaded hole in the nut plate with the holes in the frame now to make installation easier. **FIG 1**
3. Pass the **(1) Rear Nut Plate** over the front two large holes in the frame so that each nut is centered in the hole. **FIG 2**
4. Carefully hold the **Plow Mount** up to the machine. Use **(2) M8x25mm Hex Bolts** to lightly bolt the rear of the Plow Mount to the Rear Nut Plate. Leave bolts loose for now.
5. Reach behind the front fascia with the **(1) Front Nut Plate**, the nut plate should sit on top of the factory tie down point as shown in **FIG 3**. Line up the Plow Mount and lightly secure with **(2) M8x25mm Hex Bolt**.
6. Use **(2) M8x25mm Hex Bolt** to bolt the Middle Nut Plate to the Plow Mount.
7. Center the plow mount on the frame and fully tighten the middle M8x25mm Hex Bolts first. Next, tighten the front two bolts making sure to tighten them evenly. Finish by tightening the rear bolts.

Periodically check the plow mount throughout the snow season to verify hardware is tight.

## REMOVE THIS PLOW MOUNT FOR NORMAL UTV USE



[See related videos »](#)